

Diaphragm Pressure Gauges

for chlorine metering services

vertical diaphragm, polyamide screw ring case

PsPK 63-2

Standard Version

Information on advantages, application fields, temperature resistance, metrological features and pressure ranges of all available diaphragm pressure gauges with vertical diaphragm can be found in our model overview 4000.

Application

Diaphragm pressure gauges with vertical diaphragm model PsPK 63-2 have been developed for the application in chlorine metering services.

The lower part of the diaphragm with the connection thread is made of steel. The wetted parts are not enamelled. The diaphragm is protected by a fine silver foil which is applicable for use under vacuum. The case made of impact resistant polyamide with screw ring protects the inner parts from all external harmful influences (chloric gas).

Nominal Case Size (NCS)

63 (mm) (2 1/2")

Accuracy (EN 837-3)

Class 2.5

Pressure Ranges (EN 837-3)

0 – 1 bar to 0 – 40 bar (0 – 15 psi to 0 – 600 psi)

also all corresponding standard vacuum and compound ranges;

preferably -1 – 0 bar and 0 – 16 bar

(-15 – 0 psi and 0 – 200 psi)

Maximum Load Limits

Steady load:

full scale value

Dynamic load:

90 % of full scale value

Overload:

1.3 x full scale value

Temperature Resistance

Storage temperature: -40 °C to +70 °C (-40 °F to 158 °F)

Ambient temperature: -20 °C to +60 °C (-4 °F to 140 °F)

Medium temperature: +60 °C max (140 °F)

Reference Temperature

+20 °C (+68 °F)

Temperature Caused Error

If the operating temperatures of the measuring unit (resilient element and movement) deviate from the reference temperature, additional deviations of the indication could occur. In accordance with EN 837-3 these can be up to ± 0.8% of the span per 10 K.

Protection Type (EN 60529 / IEC 529)

IP 65

Process Connection

G 1/4 B (1/4" BSP) bottom connection steel with orifice Ø 5 mm (0.20"),

or optionally centre back connection (rm)

connection and lower part of the diaphragm steel, black enamelled

Diaphragm

vertical, with fine silver foil (Ag-foil),

pressure ranges -1 – 0 bar and 0 – 1 bar (-15 – 0 psi and 0 – 15 psi) Duratherm^{®1)},

pressure ranges 0 – 1.6 bar to 0 – 40 bar (0 – 30 psi to 0 – 600 psi) steel enamelled¹⁾

Sealing

O-Ring FPM (Viton[®])

Movement

Brass/German silver



Dial

Aluminum, black figures, white background, dial inscription: Cl₂

Pointer

Aluminum black

Case and Ring

Fibre-glass reinforced polyamide 6B black, screw ring, case sealed against external influences

Safety Feature

Pressure relief vent

Window

Polycarbonate (PC)

Special Versions amongst others

- Other process connections upon request
- Other materials for wetted parts, e.g. 316 L and others upon request
- Movement made of stainless steel upon request
- Special scales, e.g. double scales and others upon request
- 3-times overrange protected up to max. 50 bar
- Reed-Switch analog DS 1219.4

Ordering Information

Model and NCS: **PsPK 63**

Ordering code of the wetted parts: **- 2**

Code letters of the case configuration: without = bottom connection, **rm** or **rmT** (see reverse side)

Pressure range: according to EN 837-3 respectively table on page 2, e.g. **-1 – 0 bar** or **0 – 16 bar**

Process connection: **G 1/4 B** (Standard)

Specifics: (see above)

Examples for ordering information:

- PsPK 63-2, -1 – 0 bar, G 1/4 B
- PsPK 63-2, rm, 0 – 16 bar, G 1/4 B

¹⁾ NiCrCo-alloy



Sales and Export South, West, North

ARMATURENBau GmbH

Manometerstraße 5 • D-46487 Wesel - Ginderich
Tel.: +49 (0)28 03/91 30-0 • Fax: +49 (0)28 03/10 35
armaturenbaum.com • mail@armaturenbaum.com

Subsidiary Company, Sales and Export East

MANOTHERM Beierfeld GmbH

Am Gewerbepark 9 • D-08344 Grünhain-Beierfeld
Tel.: +49 (0)37 74/58-0 • Fax: +49 (0)37 74/58-545
manotherm.com • mail@manotherm.com

4310

10/14

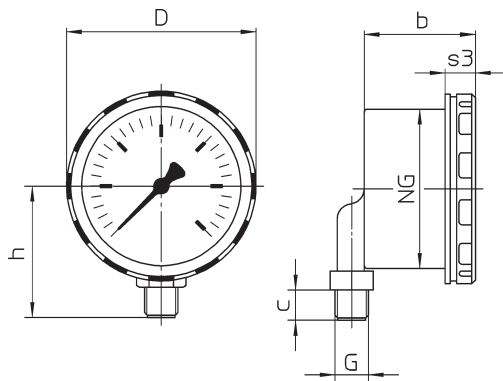
Case Configurations, Code Letters, Dimensional Data and Weights

Bottom connection

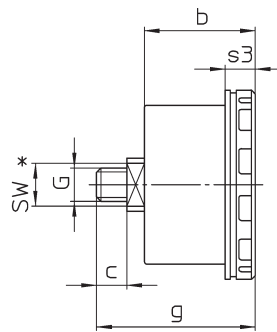
Centre back connection

without mounting device

(no additional code letters)



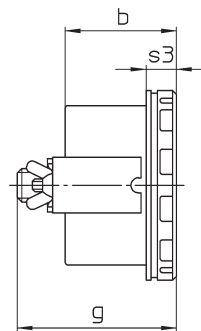
code letters: **rm**



* two flats

U-clamp for panel mounting

code letters: **rmT**



Dimensional Data (mm / inches) and Weights (kg / lb)

NCS	a	D	b	b1	b4	c2	g	G	h ^{±1}	s4	SW	approx. weight ¹⁾
63 2 1/2"	7 0.28	75 2.95	44 1.73	44 1.73	58 2.28	13 0.51	63 2.48	G 1/4 B 1/4" BSP	52 2.05	12 0.47	17 0.67	0.28 0.62

¹⁾ information for version without mounting device

Pressure Ranges / Scale Division

Pressure ranges according to DIN EN 837-3 (bar)	Smallest subdivision of the scale (bar)	
Vacuum	-1 – 0	0.02
Compound range	-1 / + 0.6	0.05
	-1 / + 1.5	0.1
	-1 / + 3	0.2
	-1 / + 5	0.2
	-1 / + 9	0.2
	-1 / + 15	0.5
	-1 / + 24	1.0
Pressure	0 – 1.0	0.02
	0 – 1.6	0.05
	0 – 2.5	0.1
	0 – 4	0.2
	0 – 6	0.2
	0 – 10	0.2
	0 – 16	0.5
	0 – 25	1.0
	0 – 40	2.0