

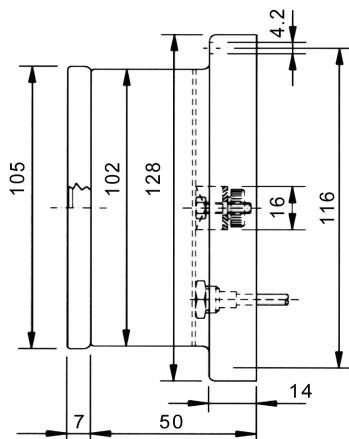
Dial Thermometers

1100 HBR/V



1100 HBR/V

Dial Size	100 mm (63 mm available ex factory)
Case	Stainless Steel
Mount	Surface or panel mount
Range	-40 to 350° Celsius
Accuracy	+ / - 1%
Probe	8.5 mm diameter
Stem	40 to 170 mm - adjustable length with compression fitting
Capillary	2500 mm (PVC coated to 120°C; copper braided for ranges >120°C)
Connection	3/8" BSP compression fitting with 1/2" BSP adaptor



Options	
01	with integrated electric contacts
02	brass thermowell (pocket) 160mm
03	stainless steel thermowell 160mm
04	rear entry, panel mount with bracket
05	rear entry, panel mount with front flange
06	red marking pointer
07	maximum indicator pointer fitted
08	special dial made to order
09	Perspex window instead of glass

Stock Items: (all surface/wall mount, rear bottom entry) (for pricing see page 6 of Item Price List)

Temperature Range	Part No.
-40 to 40°C	611 004 040
0 to 60°C	611 000 060
0 to 100°C	611 000 100
0 to 120°C	611 000 120
0 to 160°C	611 000 160
0 to 200°C	611 000 200
0 to 250°C	611 000 250
0 to 350°C	611 000 350

Dial thermometers can be ordered exactly to customers specifications, incl. larger/smaller case size, different length of capillary/probes and ranges etc. Delivery times apply.

All prices exclude GST. We reserve the right to change technical specifications & prices without prior notice.