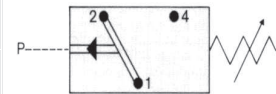
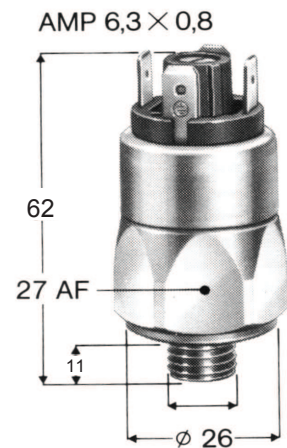




High Pressure Switch up to 250V change-over contacts

Model 0183

Body Material	Zinc plated steel body
Ranges	10,000 to 40,000 kPa
Max. Pressure Rating	Static 60,000 kPa (8700 PSI)
Contact	Change-over
Contact Rating	250 VAC / 4 A
Hysteresis	Supplier adjustable (approx 10 to 30% of set point)
Protection	IP65 with connector
Max. Operation	200 / min
Mechanical Life	10 ⁶ operations @ ≤ 50 bar
Temperature Range	-5 to 120° C (dependant on seal material)
Connection	M14 x 1.5; 1/4" BSP with optional adaptor
Type 0183	Piston type

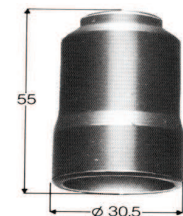


Special Manufacture:

- NBR, EPDM, Silicone or HNBR diaphragms
- Other threads (metric and imperial)
- DIN Plug



Connector



Stock Ranges: (for pricing see page 18 of Item Price List)

Adjustment Ranges		Contact	Seal	Part No.
10000 - 30000 kPa	1450 - 4350 PSI	Change-over	FKM	836 210 003
20000 - 40000 kPa	2900 - 5800 PSI	Change-over	FKM	836 310 003

OPTIONS: (for pricing see page 18 and 19 of Item Price List)

Connector for convenient installation & IP65 protection of terminals	805 200 003
Adaptor from M14x1.5 to 1/4" BSP	832 000 000
Switch setting to customers specification	99 100 660
Hysteresis setting to customers specification	99 100 661

Warning! When using with oxygen, the relevant accident-prevention regulations must be observed. In addition, we recommend that a maximum operating pressure of 1,000 kPa (145 PSI) is not exceeded. All prices exclude GST. We reserve the right to change technical specifications & prices without prior notice.