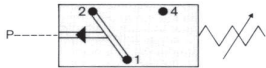


Low Pressure Switch up to 250V change-over contacts




Pg 9



Model 0175	
Body Material	Aluminum body
Range	10 to 100 kPa
Max. Pressure Rating	Static 2500 kPa (360 PSI)
Contact	Change-over
Contact Rating	Resistive: 6 A @ 24 VDC & 3 A @ 220 V Inductive: 6 A @ 24 VDC & 500 mA @ 220 V
Hysteresis	Supplier adjustable 10 to 30%
Protection	IP65
Max. Operation	200 / min
Mechanical Life	10 ⁶ operations @ ≤ 50 bar
Temperature Range	Dependant on seal material (see table below)
Connection	1/4" BSP female
Type 0175	Diaphragm type

0175 switch special features:

Set point change is possible during operation, large diaphragm allows accurate adjustment of set point. Adjustment screw is protected from unauthorised or accidental use. Switch has DIN plug connection (DIN 43 650).

Stock Ranges:

(for pricing see page 16 of Item Price List)

Adjustment Ranges		Contact	Seal	Part No.
10 - 100 kPa	1.45 - 14.5 PSI	Change-over	Viton	0175 43514 3 001

Special Manufacture:

- Manifold connection
- Extra ranges
- Different seal materials

Warning! When using with oxygen, the relevant accident-prevention regulations must be observed. In addition, we recommend that a maximum operating pressure of 1,000 kPa (145 PSI) is not exceeded. All prices exclude GST. We reserve the right to change technical specifications & prices without prior notice.