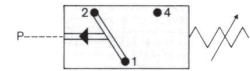
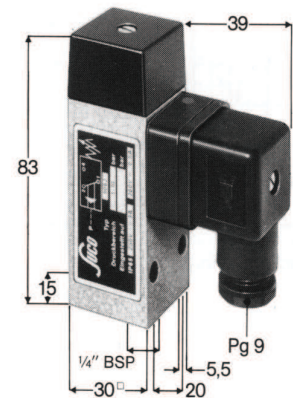




Pressure Switch up to 250V change-over contacts

Model 0161

Body Material	Aluminum body
Ranges	50 to 40,000 kPa
Max. Pressure Rating Static	Adjustment range to 10,000 kPa = 20,000 kPa (2900 PSI) Adjustment range to 40,000 kPa = 60,000 kPa (8700 PSI)
Contact	Change-over
Contact Rating	Resistive: 2 A @ 24 VDC & 200 mA @ 220 V Inductive: 2 A @ 24 VDC & 1 A @ 220 V
Hysteresis	Supplier adjustable 10 to 30%
Protection	IP65
Max. Operation	200 / min
Mechanical Life	10 ⁶ operations @ ≤ 50 bar
Temperature Range	-5 to 120° C (dependant on seal material)
Connection	1/4" BSP female
Type 0161	Diaphragm type
0161 44114 3 001	Piston type



Type 0161 Pressure Switch Special Features:

Set point adjustment is possible during operation, adjustment screw is protected from unauthorized or accidental use. Switch has DIN plug connection (DIN 43 650).

Special Manufacture:

- NBR, EPDM, Silicone or HNBR diaphragm or piston seals
- Manifold connection

Stock Ranges: (for pricing see page 16 of Item Price List)

Adjustment Ranges		Contact	Seal	Part No.
50 - 500 kPa	3 - 29 PSI	Change-over	FKM	0161 43714 3 001
100 - 1000 kPa	14.5 - 145 PSI	Change-over	FKM	0161 43814 3 001
1000 - 5000 kPa	145 - 725 PSI	Change-over	FKM	0161 43914 3 001
5000 - 10000 kPa	725 - 1450 PSI	Change-over	FKM	0161 44014 3 001
10000 - 40000 kPa	1450 - 5800 PSI	Change-over	FKM	0161 44114 3 001

OPTIONS: (for pricing see page 19 of Item Price List)

Switch setting to customers specification	99 100 660
---	------------

Warning! When using with oxygen, the relevant accident-prevention regulations must be observed. In addition, we recommend that a maximum operating pressure of 1,000 kPa (145 PSI) is not exceeded. All prices exclude GST. We reserve the right to change technical specifications & prices without prior notice.